

Evaporator Motors Rebuilt

Taiwan has been at the forefront of electrical and mechanical engineering for many years. The quality of work has been high and reliable. One area where Brigantine in Taiwan has taken advantage of this is in the reconditioning of evaporator motors used in reefer containers.



A common defect of evaporator motors is that the wiring gets burnt out due to various reasons. These evaporator motors would then have to be replaced with a new unit or a rebuilt motor.

Using a rebuilt motor has often not been a good solution because when the motors are not rebuilt properly, they too burn out very quickly, causing another repair not long after the old motor was replaced.



In Kaohsiung, Brigantine Taiwan has been able to rebuild the motors to a standard that makes the rebuilt motor to the same quality as a new unit. Cost wise, a rebuilt motor is about half the cost of a new unit.

We have customers in Asia that takes advantage of our ability to rebuild such motors and even with the transportation cost it makes it worth while to send batches of burnt motors to Brigantine Taiwan for rebuilding them.

Welcome!

This month is our sixth themed newsletter focusing on Container Spare Parts Supply, and some new Specialty Container product offerings.

Each month offers a snap shot into different aspects of Brigantine's various business activities.

This edition focuses on one of the most commonly used container spare part, wooden floor boards, and a "how to" guide on what to look for when choosing a quality floorboard. We are also proud to include the most up to date container spare parts catalogue along with this e-newsletter.

We thank you, our valued customer and business partner, for your on going support.

Yours faithfully,

John Brennan
Managing Director



Inside this issue

	<u>Page</u>
■ Evaporator Motors Rebuilt	1-2
■ Trendy Tailor-made Toilet Container	2
■ HSSE Knowledge Game	3
■ How Do We Determine the Quality of a Container Floorboard?	4-5
■ Special Bonus - Updated Container Spare Parts Catalogue	6-34

Processes of rebuilding the motors:

1. Replacing Burnt Coil.
2. Placed the Isolation sheet
3. Batching the High Speed and Low Speed Coils
4. Welding the High Speed and Low Speed Coils
5. a. Reorganizing the Coil batches, b. Coil Batch Binding, c. Isolating
6. Rotor Conditioning and bearing Change
7. Stator and Rotor Assembly
8. Isolation Testing and Running Test
9. Motor Polishing and Painting



The global economic crisis makes this high quality rebuilt motor of significant savings to companies that maintain reefer containers. In Brigantine Taiwan we are able to provide the service of handling the rebuilding of evaporator motors in batches. Shipping in batches further minimizes transportation costs. Please contact our procurement department to get a quotation of rebuilding your evaporator motors.

For enquiry, please contact Ms Lindy Lu of Brigantine Services (Taiwan) Co., Ltd at **+886 7821 7722 ext 330**.

Trendy Tailor-made Toilet Container

Bring this mobile sanitary unit to provide comfort and convenience for your employees, customers, visitors, participants, soldiers, partners or even students in your construction sites, work locations, exhibitions, open-air shows, school areas, medical centers, fiesta.....and many more different occasions!!

Portable & Convenient

Toilet container is modified from a standard 20ft or 40ft ISO container equipped with all necessary toilet equipment. It is mobile and easy to handle, which is handy for those who frequently move to various locations as temporary usage.

Toilet container can be produced within one month including delivery time to common destinations in the Far East. We can ship globally, but if farther locations might add a little extra time for the transport.

The whole toilet container is re-painted in order to maintain its life span and good outlook. A wide range of colors can be chosen by customers to suit your specifications.



High Quality Special Features

All toilet containers are equipped with full toilet equipment with high quality to suit your needs.

- A. Plastic fiber board is applied on the walls and ceiling for easy cleaning.
- B. Electricity system & drainpipe are pre-installed for easy handling and safety
- C. Ventilator and window are well-equipped for air circulation.
- D. Wash basin, toilet seats are well-installed with good quality with sanitary condition.
- E. Floor is paved with concrete and colorful ceramic tiles.

Flexible

Various kinds of construction materials and colors are available in order to meet your expectation and requirements.

Reasonable Price

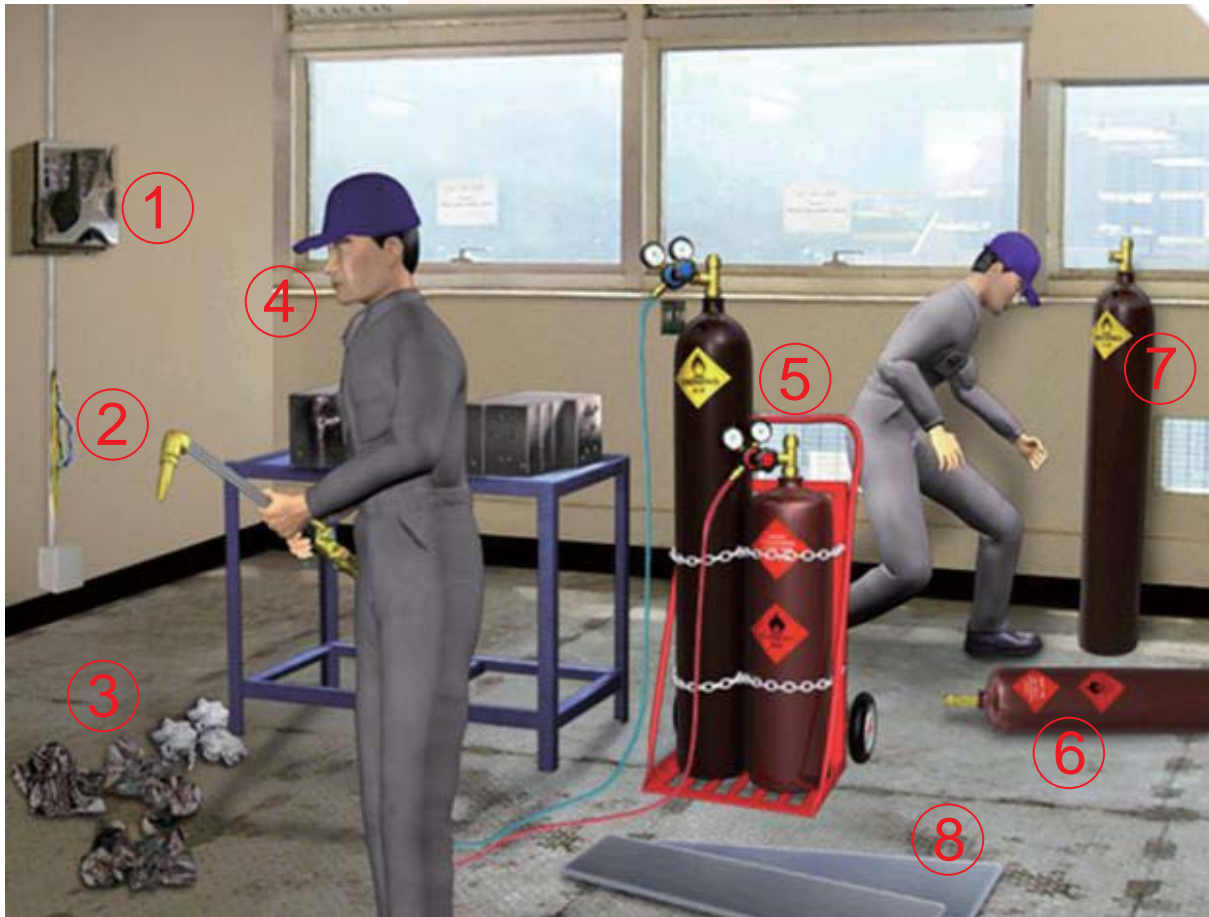
Brigantine has long been known for keeping the price of our products reasonable and our latest offering is no exception.

For further enquiries, please feel free to call:

- Contact : **Miss Terrie Ng**
 Telephone : **+852 3765 7783**
 Email : **gcabrgcet@brigantinegroup.com**



HSSE Knowledge Game



Please peruse above picture and justify the following 10 questions with : “✓” = right, “x” = wrong

1. ① and ② have the potential risk of contacting with live part of power cable
2. Welders may repair the electrical installation at ① and ②
3. Welding sparks may ignite the scrap on the floor at ③
4. The welder at ④ may only wear protective mask while protective glasses is unnecessary
5. Extinguisher shall be allocated at fire-work area in this picture
6. Flashback valve of ethyne cylinder at ⑥ is not necessary
7. Ehtyne cylinder at ⑦ may lie on the floor when using
8. Gas cylinder may be conveyed by rolling on the floor
9. The placement of gas cylinder at ⑦ is correct
10. The sharp edge of iron plate at ⑧ may cause foot injury

Important Notice

1. Please send your answers to Brigantine QHSSE department by email: gcabrgqhsse@brigantinegroup.com before 30 September 2009.
2. Please state clearly your company name, your personal valid contact no. and postal address on your mail.
3. Brigantine QHSSE department will award one mysterious gift to twenty winners by lucky draw from the participators with all correct answers in October 2009.
4. Brigantine QHSSE staff will contact you and mail the gift to you if you are the final winners.
5. Should you have any queries, please don't hesitate to contact Mr Edmond Leung of Brigantine QHSSE department at +852 3765 7760 or email to gcabrgqhsse@brigantinegroup.com.
6. Brigantine QHSSE department reserves the final potency of the quiz if any dispute.

How Do We Determine the Quality of a Container Floorboard?

Floorboards are crucial part of a dry container in that they must be strong enough to withstand the load of cargo and thus protect the cargo from being damaged and contaminated during transit.

According to market accepted container repairing standards for quality minded customers, we can define floorboard quality by 6 different criteria, they are:

1. Loading capacity
2. Density
3. Moisture content
4. Specification of glue
5. Size and combination of layers
6. Appearance

1. Loading capacity

Loading capacity is the key and the most basic requirement of a qualified floorboard. Floorboards for container repair should reach a loading requirement of 7,260kg. Statistics and experience show us that most of the customer complaints on floorboard are related to loading capacity. Therefore, in the process of qualifying a new floorboard supplier, apart from requesting for the certificate of the loading capacity, Brigantine's Procurement department also arranges an independent test with a third party, under the supervision of an appointed Lloyd's surveyor. The result of this test is regarded as a key qualification indicator. Beyond the initial load test, additional tests are conducted on a yearly basis to ensure consistency and quality. In addition to the annual loading test, we have our own Incoming Quality Control (IQC) program performed by the storekeepers for day to day quality inspection. IQC requires simulated loading test by randomly select test pieces on every 500 pieces of floorboard delivered by the supplier.



7,260kg loading test for Brigantine container floorboards



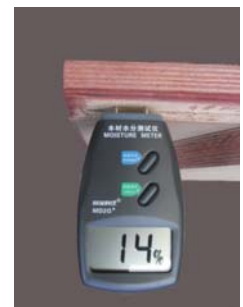
Simulated loading test by 8 tons forklift by our Storekeeper in IQC program

2. Density

The density of floorboards should reach 750kg/m³, but varies slightly with different kinds of wood. The density directly affects the loading capacity of floorboard. According to market accepted repairing standards, for a standard size floorboard 28 x 1160 x 2400mm, its weight should reach minimum 58.5kg. The density check under our IQC program is performed upon every batch of delivery, sample size is 10% of the delivered quantity.

3. Moisture content

The water ratio of the floorboard should not be more than 14%. The water ratio is one of the key quality indicators which can easily be neglected. An excess water ratio not only gives a false result on the density, it also adversely impacts the anti-corrosion performance and the life span of the floorboard. To ensure the moisture content is up to standard, our IQC conducts moisture test by moisture



4. Specification of glue

The bonding strength of the floorboard very much relies on the quality of glue. Market accepted repairing standards from quality conscious customers requires the use of phenolic glue, as it demonstrates the potency in bonding strength and performance with regard to durability. Unfortunately, the use of lower quality urea-formaldehyde glue is however widely used by low-end floorboard manufacturers due to its cheaper cost. To test the bonding strength so as the glue quality, our IQC randomly performs water logging test on one out of every 1,000 pieces of floorboards delivered.

5. Size and combination of layers

As per market accepted repairing standards, a floorboard should be 28mm thick, in layer of 19 plies or 21 plies. The so-called "3x2 structure" is proven as an accepted structural quality in respect of loading capacity. "3 x 2 structure" means 3 plies of Apitong wood or Keruling wood applied to both the top veneer and the bottom veneer of the floorboard. Sampling percentage of our IQC on this parameter is 2% of each delivery.

6. Appearance

As per market accepted container repairing standards from quality conscious customers:

Top Surface

Splits

A split in the top veneer shall not exceed 4mm width, 1.5mm in depth and 300mm in length or equivalent area. Split exceeding 1.5mm in width should be skillfully repaired to a smooth finish by plastic wood putty. Maximum allowable number of splits per board is 5. No splits allowed deeper than the first ply.

Worm holes/tracks

Wormholes or tracks are not allowed in the top veneer. In case any evidence of wormholes or tracks the floorboard is rejected.

Bottom Surface

Splits

A split in the bottom veneer shall not exceed 5mm in width and 450mm in length or equivalent area. Maximum allowable number of splits per board is 5. No splits allowed deeper than the first ply. Bottom surface will be coated with seal under.

Worm holes/tracks

Holes: Max diameter shall be 2mm or less and shall not be clustered in one area.

Tracks: Max length shall not exceed 15mm and the number shall not exceed 4 tracks per square meter

From market accepted container repairing standards, either color difference on the top veneer or the straightness of the inner layers are regarded as nature of plywood material after heat pressing. They are both acceptable for container repairing.

Sampling percentage of our IQC on this parameter is 2% of each delivery.

For further information on ordering high quality floorboard, please contact:

Spare Part Sales : [Florence Huang](#)

Tel : [+86 755 2527 9996](tel:+8675525279996)

E-mail : GCABRGPROSPS@brigantinegroup.com



BRIGANTINE GROUP

Container Equipment
Trading



Yard Equipment
Maintenance



Container Services

Marine Services



Spare Parts Sales

PRODUCT CATALOGUE

CONTAINER SPARE PARTS



BRIGANTINE

Brigantine Group

Tel No : (86) 755 25279996

Fax No: (86) 755 25279027

GCABRGPROSPS@brigantinegroup.com

www.brigantinegroup.com





TABLE OF CONTENTS

Steel Dry Body Material	4
1 CORTEN ROOF PANEL	4
2 CORTEN SIDE PANEL	5
3 CORTEN FRONT END PANEL.....	5
4 CORTEN DOOR PANEL	5
5 CORTEN FRONT CORNER POST	6
6 REAR CORNER POST, INNER/ OUTER.....	6
7 CORTEN CROSS MEMBER	6
8 CORTEN BOTTOM SIDE RAIL.....	7
9 TOP SIDE RAIL	7
10 CORTEN DOOR SILL	8
11 CORTEN FRONT BOTTOM RAIL.....	8
12 CORTEN TOP END RAIL.....	8
13 CORTEN DOOR HEADER	9
14 CORTEN DOOR RAIL.....	9
15 FLOOR SPACER.....	9
16 CORTEN ANGLE	9
17 CORTEN TOP/BOTTOM END RAIL.....	9
18 CORTEN DOOR EDGE MEMBER	10
19 CORNER CASTING	10
20 CORTEN GOOSENECK CROSS RAIL	10
Floorboards	11
22 FLOORBOARD	11
Alu Dry Body Materials	11
23 ALU CROSS MEMBER (I-BEAM).....	11
24 ALU CROSS MEMBER CLIP	12
25 ALU TOP SIDE RAIL.....	12
26 ALU BOTTOM SIDE RAIL	12
27 ALU LASHING PLATE.....	13
28 ALU SIDE POST INNER	13
29 ALU SIDE POST OUTER.....	13
30 ALU ROOF BOW.....	13
Reefer Body Materials	14
31 T FLOORBOARD	14
32 TOP SIDE RAIL	14
33 BOTTOM SIDE RAIL LOWER	14
35 FRONT HEADER.....	14
36 REAR CORNER POST.....	14
37 REAR HEADER (DOOR HEADER)	14
38 REAR SILL	14
39 ROOF OUTER PANEL	14
40 SIDE OUTER PANEL	15
41 SIDE INNER LINING	15
42 DOOR LINING	15
43 KAZOO 44 PVC FLANG	15
45 AUTO DRAIN.....	16
46 STAINLESS SHEET	16
Door Gear	17
47 DOOR GEAR.....	17
48 VENTILATOR	19
49 DOOR SEAL.....	20
50 CSC PLATE.....	20
51 STAINLESS DOOR SEAL RETAINER STRIP.....	21



BRIGANTINE GROUP

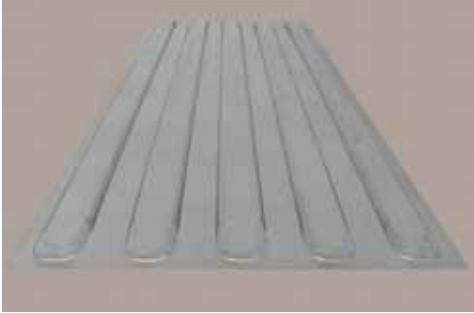
Fasten and Screws	21
52 ALU MONOBOLT.....	21
53 STAINLESS STEEL MONOBOLT	21
54 ALU HUCKBOLT.....	21
55 STEEL HUCKBOLT	21
56 TAPPING SCREW.....	22
Paints	22
57 HEMPATEX HI-BUILD 58 HEMPATEX ENAMEL	22
59 HEMPADUR ZINC 60 THINNER	22
Open Top Materials	23
61 OPEN TOP TIR WIRE	23
62 ROOF BOW FOR OPEN TOP.....	23
63 TARPAULIN	23
Hanger Materials	24
64 M3 hanger beams.....	24
65 HANGER STRING 66 HANGER STRAP	24
Reefer Units Part	24
67 CARRIER.....	24
68 DAIKIN.....	24
69 THERMO KING.....	24
Lashing Equipment	25
70 RATCHET TIEDOWN STRAP.....	25
Other Materials	25
71 CONTAINER DESICCANT.....	25
72 POLYSHEET	26
73 SEALANT	26
74 FREON.....	26
75 WELDING WIRE.....	27
76 DECAL.....	27
77 MASAVA OFFSHORE CLEANER	27
FAQ	28
Q: How to order?.....	28
Q: Why are there no prices in the catalogue?.....	28
Q: How fast I will get the products delivered once my order is confirmed?	28
Q: How to Pay?.....	28
Q: How is the quality of the spare parts assured?	28
Q: What if what I wanted is not exactly the same as shown in the catalogue, or is not in the catalogue?.....	28
Q: In what languages can you handle enquiries in?	29



Steel Dry Body Material

1 CORTEN ROOF PANEL

2.0X1045X2356MM, STANDARD, 5 CORR



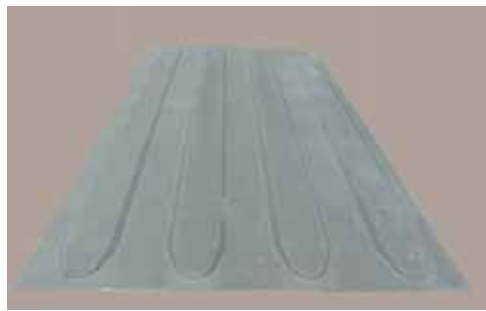
2.0X1045X2356MM, MAERSK, 4 CORR



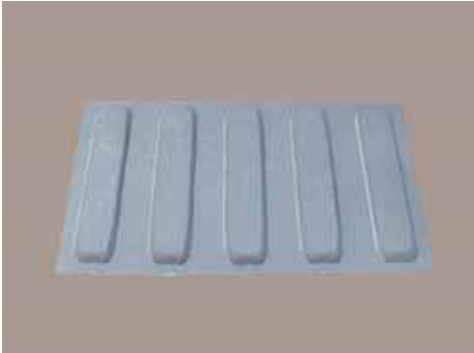
2.0X1045X2356MM, TEX, 3 CORR



2.0X1144X2359MM, EVER, 4 CORR



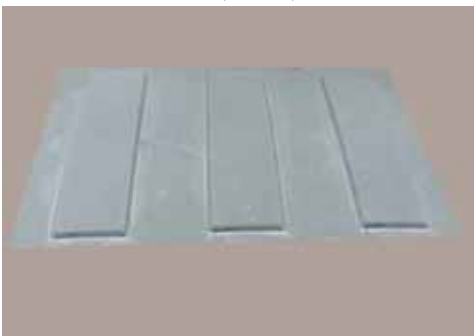
2.0X1045X600MM, STANDARD, 5 CORR



2.0X1045X600MM, MAERSK, 4 CORR



2.0X1045X600MM, TEX, 3 CORR



2.0X1144X600MM, EVER, 4 CORR





BRIGANTINE GROUP

2 CORTEN SIDE PANEL

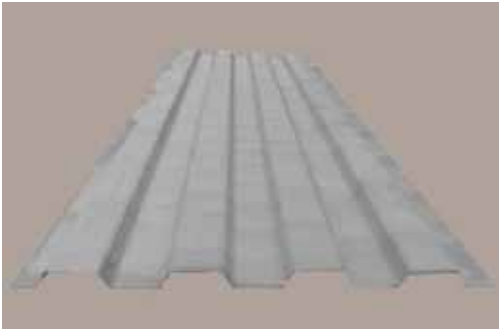
Size:
1.6X1116X2400MM, STANDARD
1.6X1116X2700MM, STANDARD



Size:
1.6X1016X2700MM, HJN
1.6X1016X2400MM, HJN

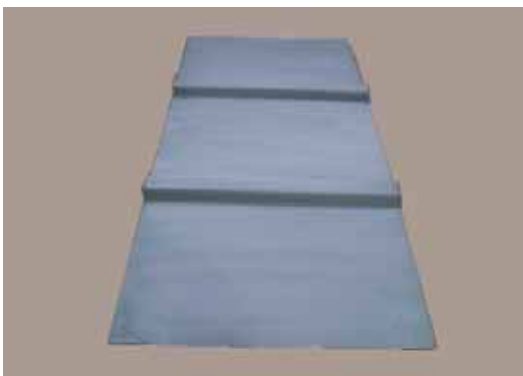


3 CORTEN FRONT END PANEL



Size:
2.0X1024X2400MM, STANDARD
2.0X1024X2700MM, STANDARD
2.0X1024X2400MM, EVER
2.0X1024X2700MM, EVER

4 CORTEN DOOR PANEL



Size:
2.0X943X1957MM, 2 CORR
2.0X943X2258MM, 2 CORR
2.0X943X1953MM, 3 CORR
2.0X943X2258MM, 3 CORR



BRIGANTINE GROUP

5 CORTEN FRONT CORNER POST



Size:
6.0X229X245X2400MM, WIDE
6.0X229X245X2700MM, WIDE

6 REAR CORNER POST, INNER

12X113X40X2353MM
12X113X40X2657MM



REAR CORNER POST, OUTER

6.0X70X39X230X2400MM
6.0X70X39X230X2700MM



7 CORTEN CROSS MEMBER

4.0X45X122X75X2350MM



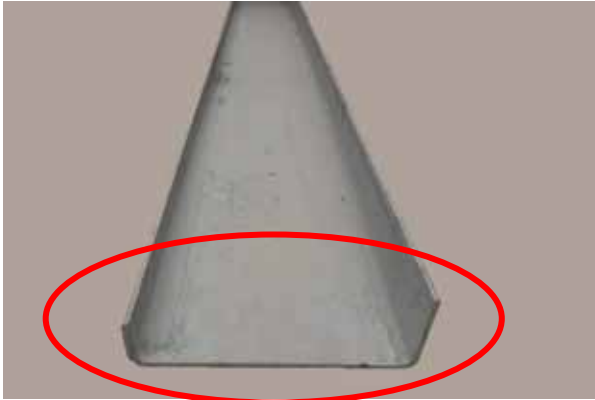
4.0X45X100X45X2350MM
4.0X45X122X45X2350MM





BRIGANTINE GROUP

8 CORTEN BOTTOM SIDE RAIL
4.5X50X155X30X5702MM



4.5X50X162X30X5702MM



9 TOP SIDE RAIL

3.0X60X60X5702MM



14X50X5702MM



T=4.0 L=2400MM W TYPE



T=4.0 L=2400MM U TYPE





BRIGANTINE GROUP

10 CORTEN DOOR SILL



Size:
4.5X158X150X2400MM

11 CORTEN FRONT BOTTOM RAIL



Size:
4.0X115X154X2400MM

12 CORTEN TOP END RAIL



Size:
3.0X397X2400MM
4.0X397X2400MM
3.0X335X2400MM



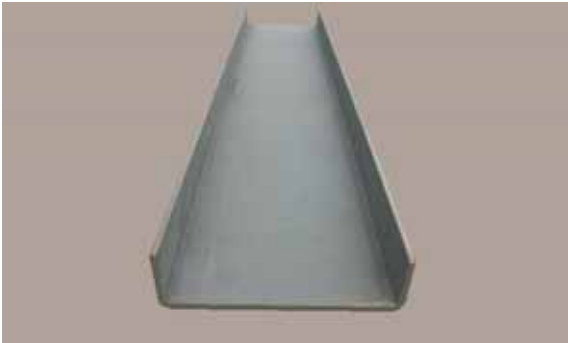
BRIGANTINE GROUP

13 CORTEN DOOR HEADER



Size:
3.0X388X2400MM
3.0X340X2400MM
4.0X112X113X137X2400MM

14 CORTEN DOOR RAIL



Size:
4.0X50X150X50X943MM

15 FLOOR SPACER

Size: 2.3X42X28X25X3000MM (Please contact us if photo required)

16 CORTEN ANGLE



Size:
4.0X50X30X2400MM
4.0X45X80X2400MM
4.0X60X115X2400MM
4.0X150X60X2400MM
6.0X100X100X2400MM
6.0X30X50X2400MM

17 CORTEN TOP/BOTTOM END RAIL

3.0X60X60X2112MM (Please contact us if photo required)



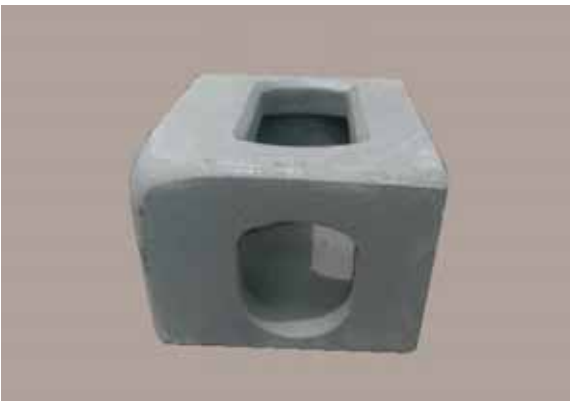
BRIGANTINE GROUP

18 CORTEN DOOR EDGE MEMBER



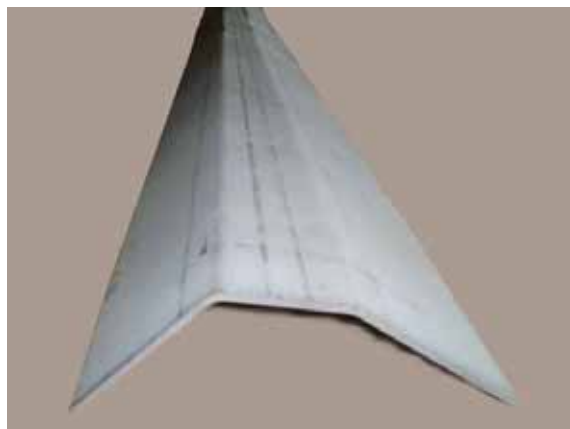
Size:
3.2X50X100X2260MM
3.2X50X100X2560MM

19 CORNER CASTING



Size:
178X162X118MM

20 CORTEN GOOSENECK CROSS RAIL



Size:
4.0X75X100X75X2268MM



BRIGANTINE GROUP

21 CORTEN FLAT PLATE



Size:
2.0X1130X2400
4.0X1480X2400

Floorboards

22 FLOORBOARD



Size:
28x1160x2400
28x1220x2400

Product Description:

- 19plys or 21 plys , 28mm in thickness;
- 3 plys(top) x 3(bottom) plys Apitong veneers + hardwood plys ;
- Max Moisture content 14%;
- Completed Basileum SI-84 Treatment;
- Density not less than 750kgs per CBM;
- Able to pass 7,260kgs loading test.
- Phenolic glue

Alu Dry Body Materials

23 ALU CROSS MEMBER (I-BEAM)



Size:
60X100X2320MM
70X80X2350MM
70X100X2320MM
60X124X2350MM



BRIGANTINE GROUP

24 ALU CROSS MEMBER CLIP

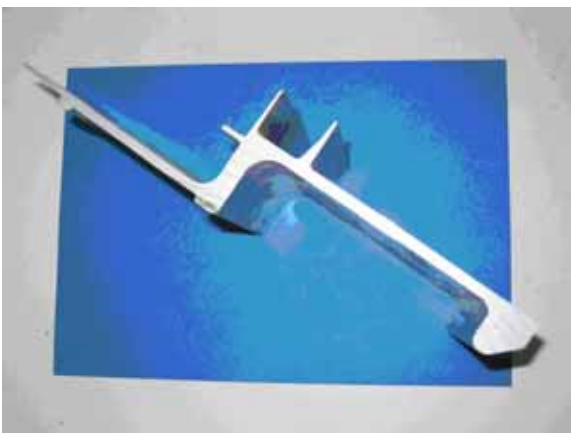


Size:
90X82.6X2400MM
76X104X2400MM

25 ALU TOP SIDE RAIL

FOR MAEU 45'
FOR SEAU 40'&45'
For APL 45'
For EVER

26 ALU BOTTOM SIDE RAIL



FOR MAEU 45
FOR SEAU 40'&45'
For APL 45'
For EVER



BRIGANTINE GROUP

27 ALU LASHING PLATE



10 (T) X 125(W) X L
6.5(T) X 100(W) X L
9.5(T) X 100(W) X L
6.0(T) X 130(W) X L

28 ALU SIDE POST INNER

Size:

75X134X2785MM
75X134X2400MM

29 ALU SIDE POST OUTER



Size:
63X140X2785MM

30 ALU ROOF BOW

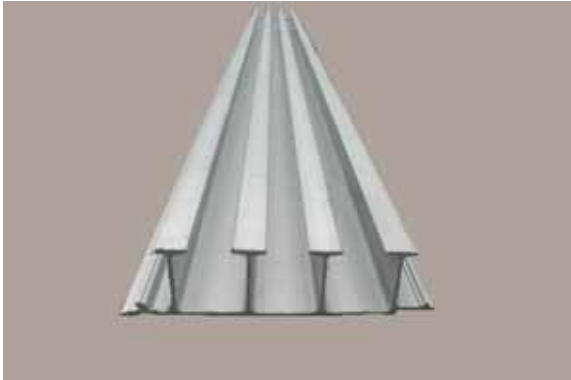


Size:
40X86X2360MM
38.5X86.5X2345MM



Reefer Body Materials

31 T FLOORBOARD



3 CORR
5 CORR
6 CORR

32 TOP SIDE RAIL CORTEN-A OR SPA-H

33 BOTTOM SIDE RAIL LOWER CORTEN-A OR SPA-H

34 FRONT CORNER POST OUTER/CORTEN-A OR SPA-H

35 FRONT HEADER CORTEN-A OR SPA-H

36 REAR CORNER POST CORTEN-A OR SPA-H

37 REAR HEADER (DOOR HEADER) CORTEN-A OR SPA-H

38 REAR SILL CORTEN-A OR SPA-H



39 ROOF OUTER PANEL MGSS(SUS430)

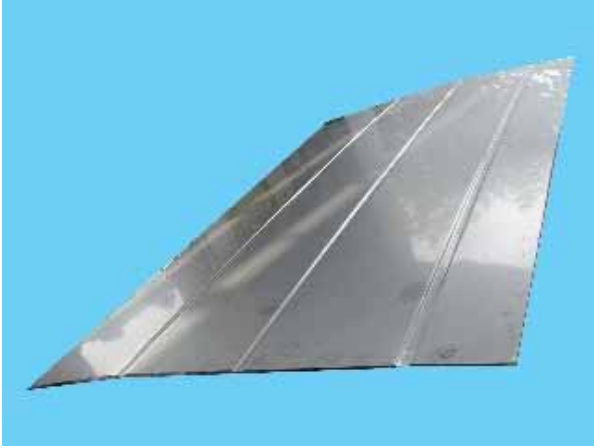




BRIGANTINE GROUP

40 SIDE OUTER PANEL

MGSS(SUS430)



41 SIDE INNER LINING
SUS 304

42 DOOR LINING
SUS 304



43 KAZOO

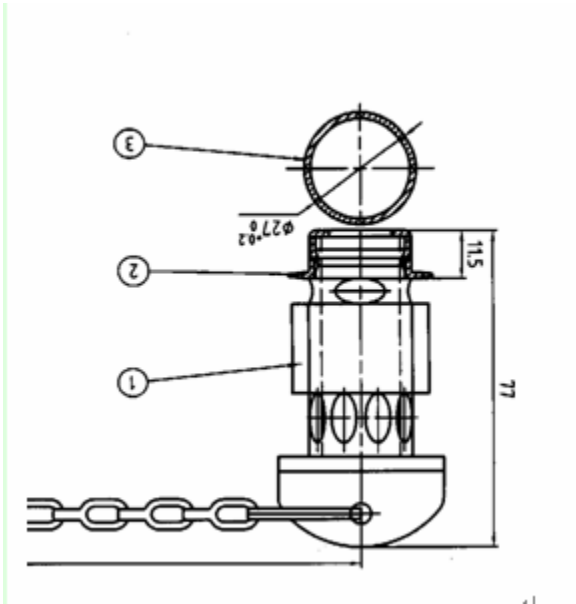


44 PVC FLANG





45 AUTO DRAIN



46 STAINLESS SHEET

SUS430-2B, 1.0X1219X2750MM
SUS304-2B, 1.0X1000X3000MM





BRIGANTINE GROUP

Door Gear

47 DOOR GEAR
CAM LH/RH/



KEEPER LH/RH



BEAR'G BRACKET OUTER



BEAR'G BRACKET OUTER S



HANDLE
FORGING TYPE



HANDLE
PRESS TYPE



RETAINER CATCH
FORGING TYPE



RETAINER CATCH
PRESS TYPE





BRIGANTINE GROUP

RETAINER PLATE
FORGING TYPE/



RETAINER PLAT
PRESS TYPE



BUSH



HANDLE HUB



RIVET



ANTI - RACK RING



SPLIT LARGE BUSH



SPLIT SMALL BUSH





BRIGANTINE GROUP

**HINGE BLADE
FORGING TYPE**



HINGE PIN



HINGE LUG



**48 VENTILATOR
"S" TYPE**



"M" TYPE





BRIGANTINE GROUP

49 DOOR SEAL



Size:

- “JC” TYPE, CONTAINER SET, 20’/40’
- “JC” TYPE, CONTAINER SET, 40’HC
- “C” TYPE, CONTAINER SET, 20’/40’
- “C” TYPE, CONTAINER SET, 40’HC
- “J” TYPE, CONTAINER SET, 20’/40’
- “J” TYPE, CONTAINER SET, 40’HC

“C” TYPE, 2.50MTRS / PC



“J” TYPE, 2.50MTRS / PC



50 CSC PLATE



Size:

- 0.8X200X250MM
- 0.8X100X200MM



BRIGANTINE GROUP

51 STAINLESS DOOR SEAL RETAINER STRIP



Size:
1.0X23X7X2549MM
1.0X23X7X2249MM

Fasten and Screws

52 ALU MONOBOLT

HZ 4.8X10MM
HZ 6.4X14MM

53 STAINLESS STEEL MONOBOLT

QBZ 4.8X10MM
QBZ 6.4X14MM



54 ALU HUCKBOLT

QLH10X8MM
QLH10X12MM
QLH10X16MM
QLH10X18MM

55 STEEL HUCKBOLT

GH10X8MM
GH10X12MM
GH10X16MM
GH10X20MM





BRIGANTINE GROUP

56 TAPPING SCREW



M8X50MM
M8X45MM
M8X65MM
M6X50MM
M6X45MM
M6X65MM

Paints

57 HEMPATEX HI-BUILD REFER TO COLOR BROCHURE



58 HEMPATEX ENAMEL 5636-1999



59 HEMPADUR ZINC 1641-1984



60 THINNER 08080





BRIGANTINE GROUP

Open Top Materials

61 OPEN TOP TIR WIRE



Size:
20'
40'

62 ROOF BOW FOR OPEN TOP

A SHAPE

B SHAPE

C SHAPE

(Please contact us if photo required)

63 TARPAULIN



Size:
20'
40'



Hanger Materials

64 M3 hanger beams



65 HANGER STRING
NYLON



66 HANGER STRAP
ORANGE/BLACK



Reefer Units Part

67 CARRIER
68 DAIKIN
69 THERMO KING

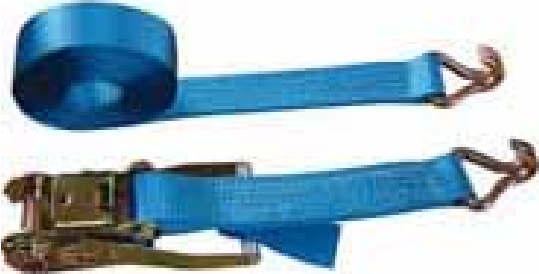
For details of reefer unit parts, please contact GCABRGPROSPS@brigantinegroup.com.



BRIGANTINE GROUP

Lashing Equipment

70 RATCHET TIEDOWN STRAP



WIDTH=75MM, 13T, L=26M, S HOOK
WIDTH=50MM, 5T, , L=26M, DOUBLE J HOOK

Other Materials

71 CONTAINER DESICCANT





BRIGANTINE GROUP

72 POLYSHEET



73 SEALANT



NEOPRENE, BLACK, 310ML/PC 30PCS/BOX
NEOPRENE, WHITE, 310ML/PC 30PCS/BOX
BUTAL, BLACK, 310ML/PC 30PCS/BOX
BUTAL, WHITE, 310ML/PC 30PCS/BOX



POLYURETHANE , BLACK, 400ML/PC
POLYURETHANE , BLACK, 400ML/PC 20PCS/BOX
POLYURETHANE , WHITE, 400ML/PC 20PCS/BOX

74 FREON



134A ,(30LBS/13.6KGS)
404A, (24LBS/10.09KGS)



BRIGANTINE GROUP

75 WELDING WIRE

ER70S D=1.0MM,20KGS PER PKGS



76 DECAL

AVAILABLE PER REQUEST



77 MASAVA OFFSHORE CLEANER





FAQ

Q: How to order?

A: If you want to get the best container spare parts at competitive prices, beating your competition while at the same time enhancing your customer's satisfaction, NOW is the time to contact us at:

Tel.No: (86) 755 2527 9996

Fax No: (86) 755 2527 9027

Email: GCABRGPROSPS@brigantinegroup.com

Website: www.brigantinegroup.com

Q: Why are there no prices in the catalogue?

A: We do not include prices in this catalogue because base material prices routinely fluctuate. Transportation costs can also vary depending on the size of order, method of shipment, and, of course, destination. Part of our commitment to our customers is to make sure we always keep abreast of the market, to get you the best price when you are ready to order. Our best price will be quoted to you when we receive your enquiry.

Q: How fast I will get the products delivered once my order is confirmed?

A: It depends on the order size/quantity, production lead-time and transportation transit time. Brigantine will prepare the goods at the earliest possible time and deliver them in the quickest, most efficient way.

Q: How to Pay?

A: You can choose to pay by Credit Card, Advance Payment, Letter of Credit, Cash on Delivery, or for our regular customers, enjoy a certain period of credit. For details, please kindly contact our sale representatives.

Q: How is the quality of the spare parts assured?

A: There are qualification certificates on steel parts and floorboards. We also carry out strict Quality Control (QC) on all incoming materials to guarantee you receive the goods of best quality.

Q: What if what I wanted is not exactly the same as shown in the catalogue, or is not in the catalogue?

A: Brigantine supplies a wide range of container parts for dry containers, reefer bodies, and Reefer Units. This catalog covers only the most commonly used container spare parts for your easy reference. Additionally, we can often tailor make spare parts according to your specific requirements. We are also often able to source some of those "hard to find" parts for older equipment. For any parts you find not included, or



BRIGANTINE GROUP

not exactly the same as the ones shown in our catalog, you are welcome to contact our Spare Parts Sale representatives for further information.

Q: In what languages can you handle enquiries in?

A: Brigantine has a multi-cultural workforce from many different backgrounds. We can easily handle written or verbal enquiries in English, Mandarin, Cantonese, Traditional or Simplified Chinese. On staff we have also have colleagues who can speak Danish, German, Malay (Bahasa) and Filipino (Tagalog). We are working on our Spanish, Korean and Thai!